

**Anti-GAB2 (pY643) Antibody**  
**Rabbit polyclonal antibody to GAB2 (pY643)**  
**Catalog # AP61269****Specification**

---

**Anti-GAB2 (pY643) Antibody - Product Information**

Application	WB, IHC
Primary Accession	<a href="#">O9UQC2</a>
Other Accession	<a href="#">O9Z1S8</a>
Reactivity	Human, Mouse, Rat
Host	Rabbit
Clonality	Polyclonal
Calculated MW	74458

**Anti-GAB2 (pY643) Antibody - Additional Information****Gene ID** 9846**Other Names**

KIAA0571; GRB2-associated-binding protein 2; GRB2-associated binder 2; Growth factor receptor bound protein 2-associated protein 2; pp100

**Target/Specificity**

Recognizes endogenous levels of GAB2 (pY643) protein.

**Dilution**

WB~~WB (1/500 - 1/1000), IH (1/50 - 1/200)

IHC~~1:100~500

**Format**

Liquid in 0.42% Potassium phosphate, 0.87% Sodium chloride, pH 7.3, 30% glycerol, and 0.09% (W/V) sodium azide.

**Storage**

Store at -20 °C. Stable for 12 months from date of receipt

**Anti-GAB2 (pY643) Antibody - Protein Information****Name** GAB2**Synonyms** KIAA0571**Function**

Adapter protein which acts downstream of several membrane receptors including cytokine, antigen, hormone, cell matrix and growth factor receptors to regulate multiple signaling pathways. Regulates osteoclast differentiation mediating the TNFRSF11A/RANK signaling. In allergic response, it plays a role in mast cells activation and degranulation through PI-3-kinase regulation. Also involved in the regulation of cell proliferation and hematopoiesis.

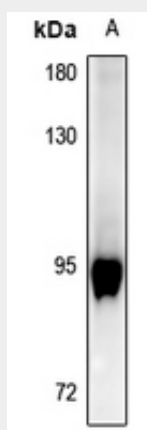
**Cellular Location**

Cytoplasm. Cell membrane. Membrane raft {ECO:0000250|UniProtKB:Q9Z1S8}

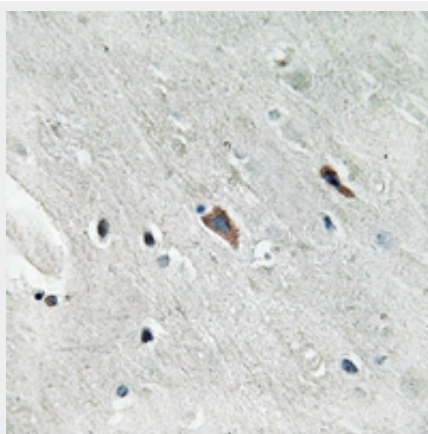
**Anti-GAB2 (pY643) Antibody - Protocols**

Provided below are standard protocols that you may find useful for product applications.

- [Western Blot](#)
- [Blocking Peptides](#)
- [Dot Blot](#)
- [Immunohistochemistry](#)
- [Immunofluorescence](#)
- [Immunoprecipitation](#)
- [Flow Cytometry](#)
- [Cell Culture](#)

**Anti-GAB2 (pY643) Antibody - Images**

Western blot analysis of GAB2 (pY643) expression in K562 (A) whole cell lysates.



Immunohistochemical analysis of GAB2 (pY643) staining in human brain formalin fixed paraffin embedded tissue section. The section was pre-treated using heat mediated antigen retrieval with sodium citrate buffer (pH 6.0). The section was then incubated with the antibody at room temperature and detected using an HRP conjugated compact polymer system. DAB was used as the chromogen. The section was then counterstained with haematoxylin and mounted with DPX.

**Anti-GAB2 (pY643) Antibody - Background**

KLH-conjugated synthetic peptide encompassing a sequence within the C-term region of human GAB2 (pY643). The exact sequence is proprietary.